

O Heart Bereaved and Lonely

Drop Low E to D
Capo V
Capo VII for group singing

Words by Fanny Crosby
Music by Christopher Miner

Chords relative
to Capo



D



D Maj7



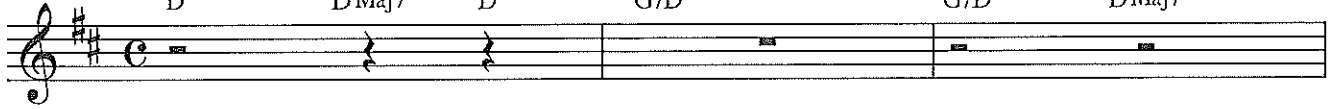
D



G/D

G/D

D Maj7



1. O heart be-reaved and lone-ly, Whose
2. O cling to thy Re-deem-er, Thy
3. Look up, the clouds are break-ing, The



bright-est dreams have fled, Whose hopes like sum-mer
Sav-ior, Broth-er, Friend, Be-lieve and trust His
strom will soon be o'er, And thou shall reach the



—ros-es, Are with-ered crushed and dead; Though
—prom-ise, To keep you till the end; O
—ha-ven, Where sor-rows are no more; Look



D



D aug



G/D

G/D

D Maj7



link by link be bro-ken, And tears un-seen may
watch and wait with pa-tience, And ques-tion all you
up, be not dis-cour-aged; Trust on, what-e'er be-

